

Obtain an IP address automatically

Use the following IP address:

IP address:

Subnet mask:

ADAPTER SETTINGS DHCP-CLIENT

HW HILGERSOM

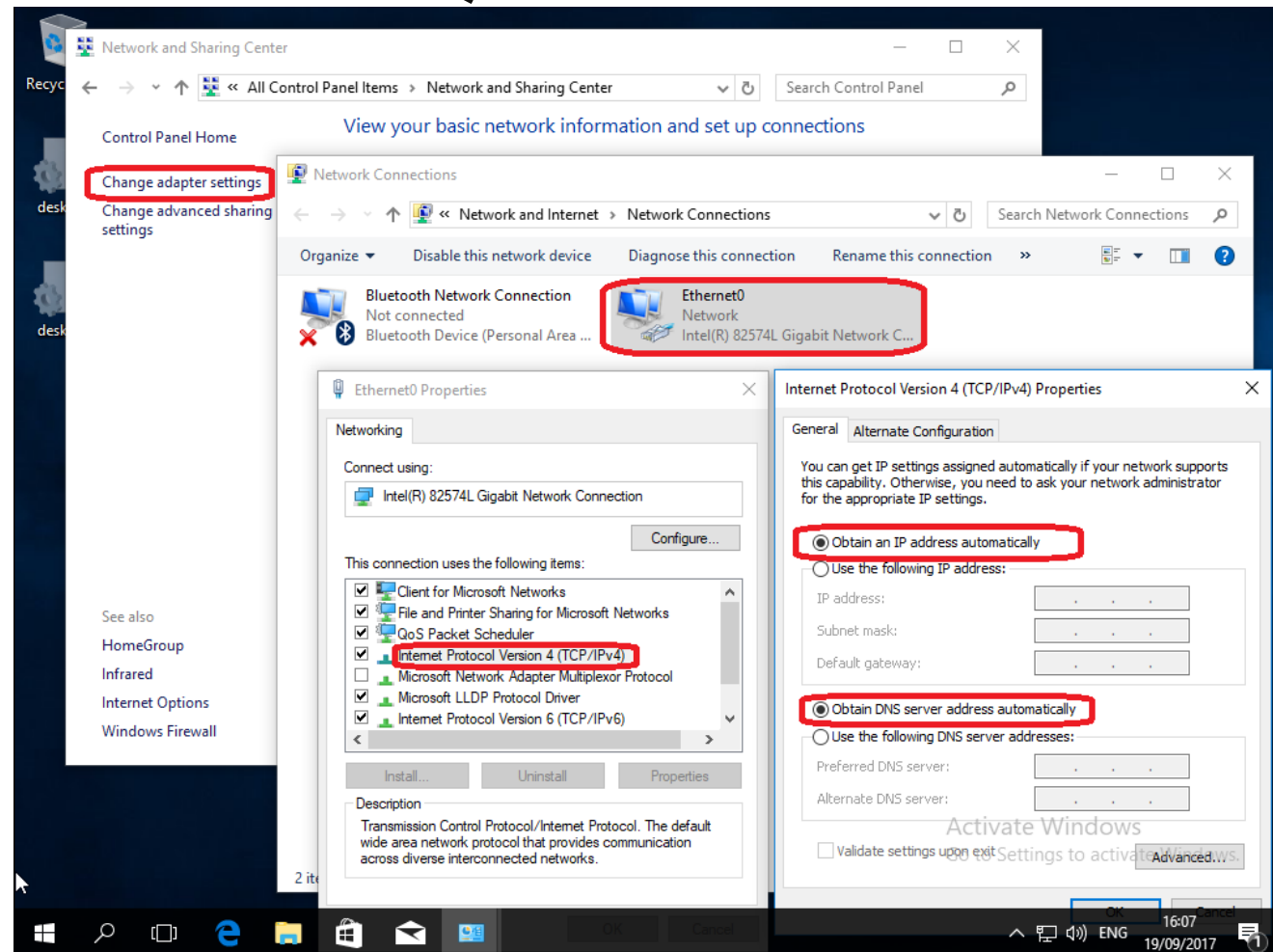
DHCP-CLIENT (WORKSTATION)

Network Sharing Center

Ethernet0

Internet Protocol Version 4

Obtain Automatically

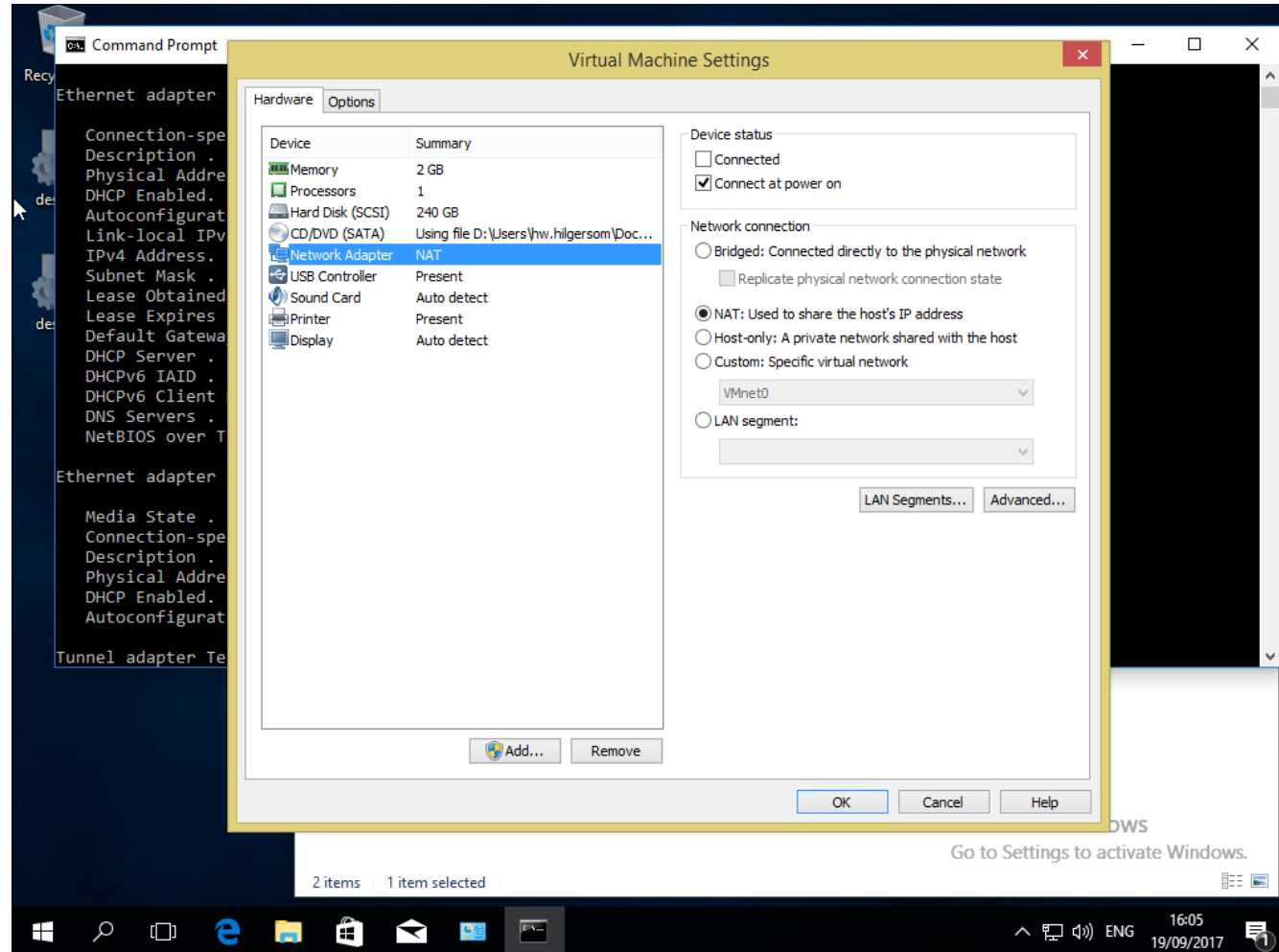


NAT (VMWARE)

VM Settings

Network Adapter

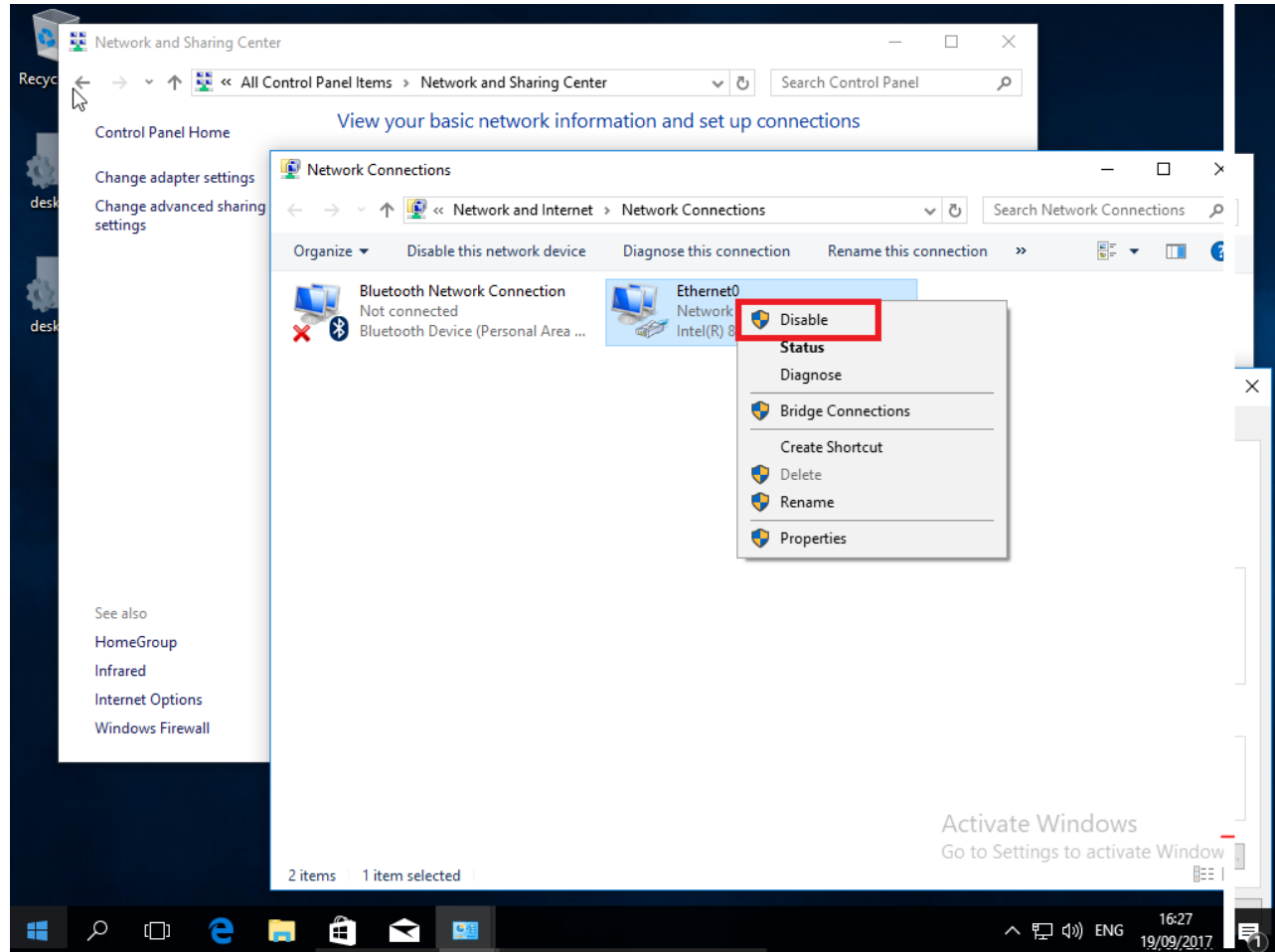
NAT



ADAPTER SETTINGS

Disable ...

Enable ...



IPCONFIG

```
Command Prompt
Microsoft Windows [Version 10.0.15063]
(c) 2017 Microsoft Corporation. All rights reserved.

C:\Users\PCGebruiker1>ipconfig

Windows IP Configuration

Ethernet adapter Ethernet0:

    Connection-specific DNS Suffix  . : localdomain
    Link-local IPv6 Address . . . . . : fe80::458d:343d:bca5:df0d%13
    IPv4 Address. . . . . : 192.168.20.131
    Subnet Mask . . . . . : 255.255.255.0
    Default Gateway . . . . . : 192.168.20.2

Ethernet adapter Bluetooth Network Connection:

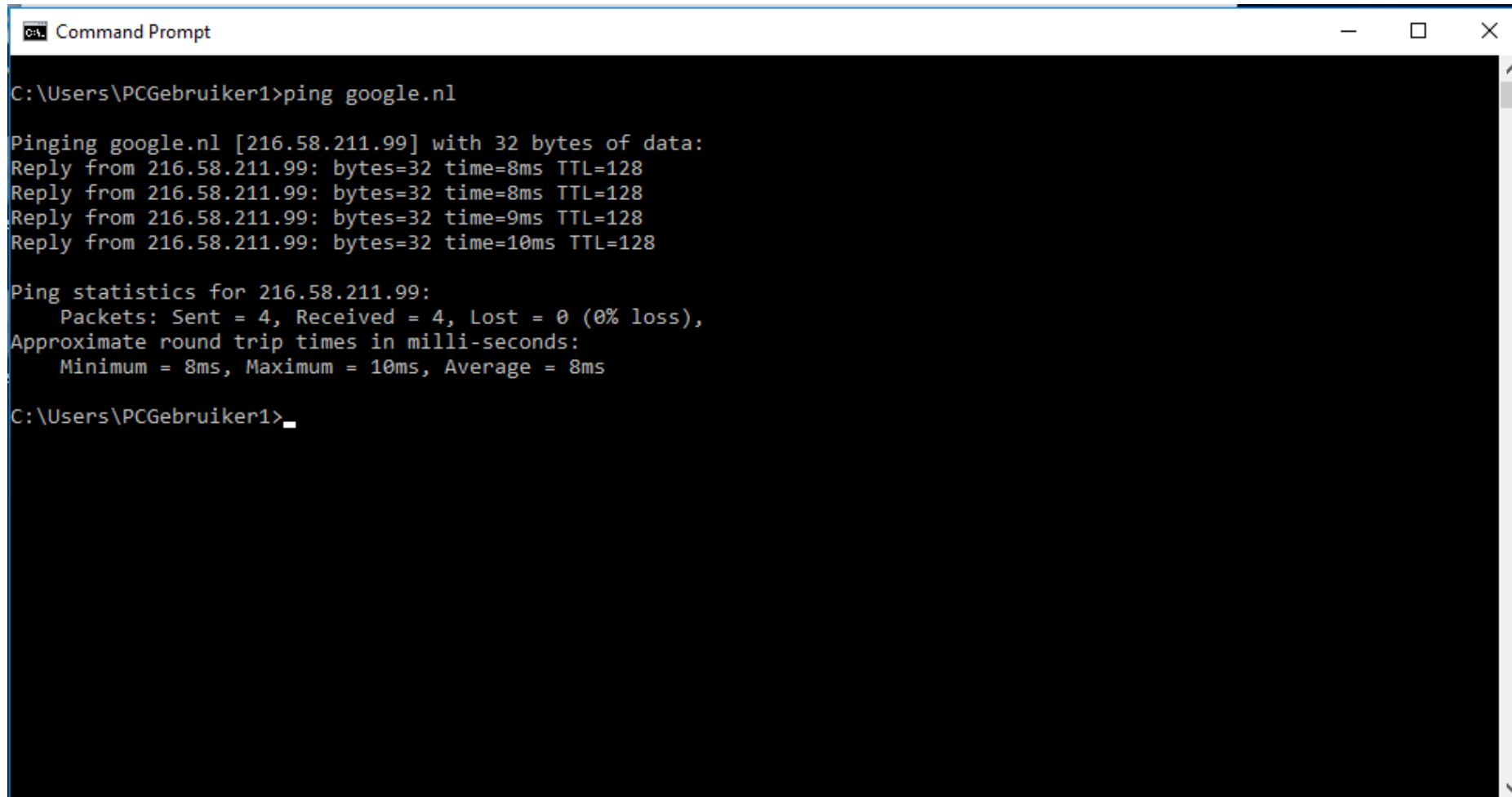
    Media State . . . . . : Media disconnected
    Connection-specific DNS Suffix  . :

Tunnel adapter Teredo Tunneling Pseudo-Interface:

    Connection-specific DNS Suffix  . :
    IPv6 Address. . . . . : 2001:0:9d38:90d7:4a4:323b:3f57:eb7c
    Link-local IPv6 Address . . . . . : fe80::4a4:323b:3f57:eb7c%17
    Default Gateway . . . . . : ::

C:\Users\PCGebruiker1>
```

PING GOOGLE.NL



```
Command Prompt
C:\Users\PCGebruiker1>ping google.nl

Pinging google.nl [216.58.211.99] with 32 bytes of data:
Reply from 216.58.211.99: bytes=32 time=8ms TTL=128
Reply from 216.58.211.99: bytes=32 time=8ms TTL=128
Reply from 216.58.211.99: bytes=32 time=9ms TTL=128
Reply from 216.58.211.99: bytes=32 time=10ms TTL=128

Ping statistics for 216.58.211.99:
    Packets: Sent = 4, Received = 4, Lost = 0 (0% loss),
    Approximate round trip times in milli-seconds:
        Minimum = 8ms, Maximum = 10ms, Average = 8ms

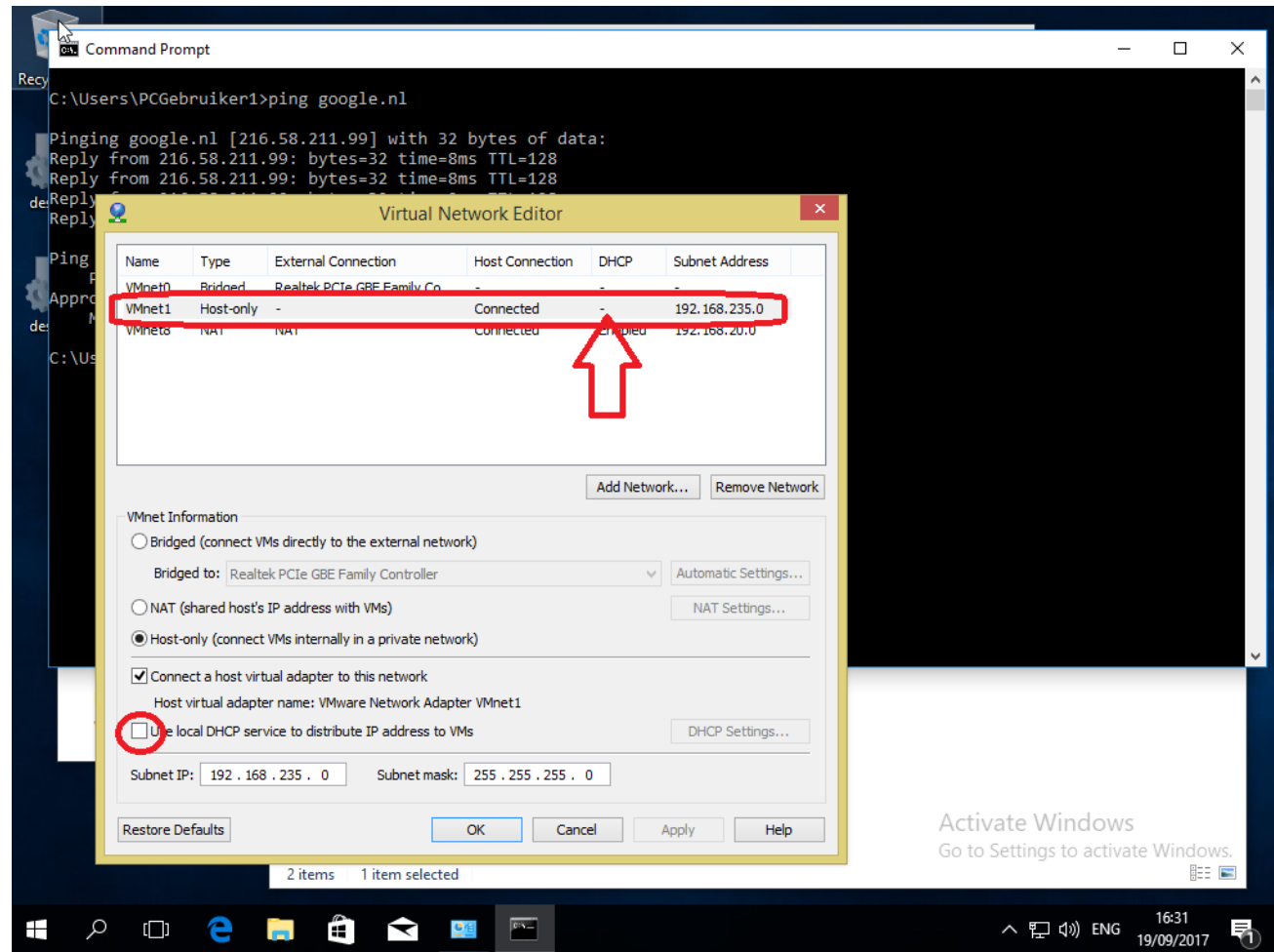
C:\Users\PCGebruiker1>
```

EDIT > VIRTUAL NETWORK EDITOR (VMWARE)

Select Host-only

Haal vinkje weg bij:

Use local DHCP service

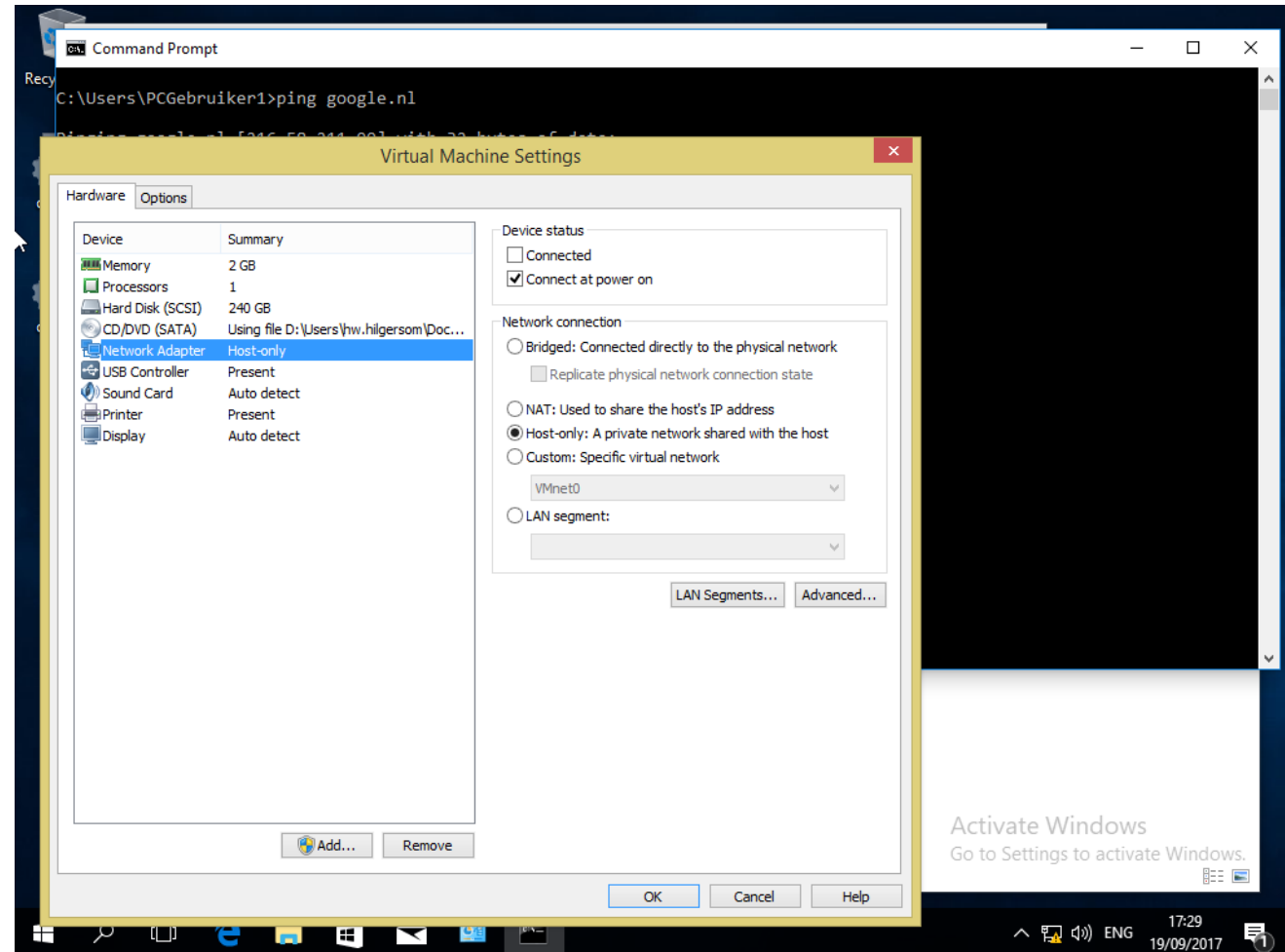


HOST-ONLY (VMWARE)

VM Settings

Network Adapter

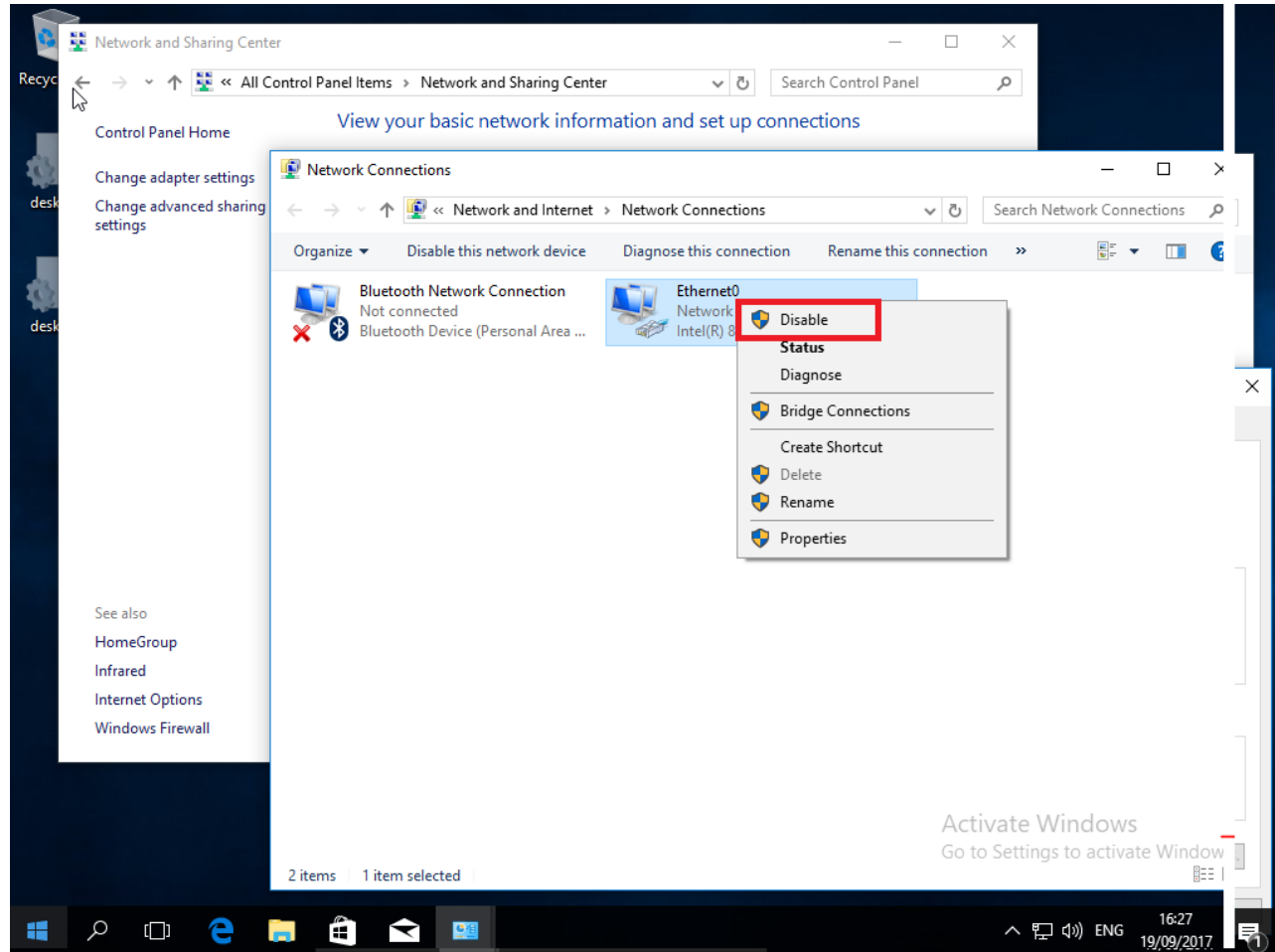
Host-only



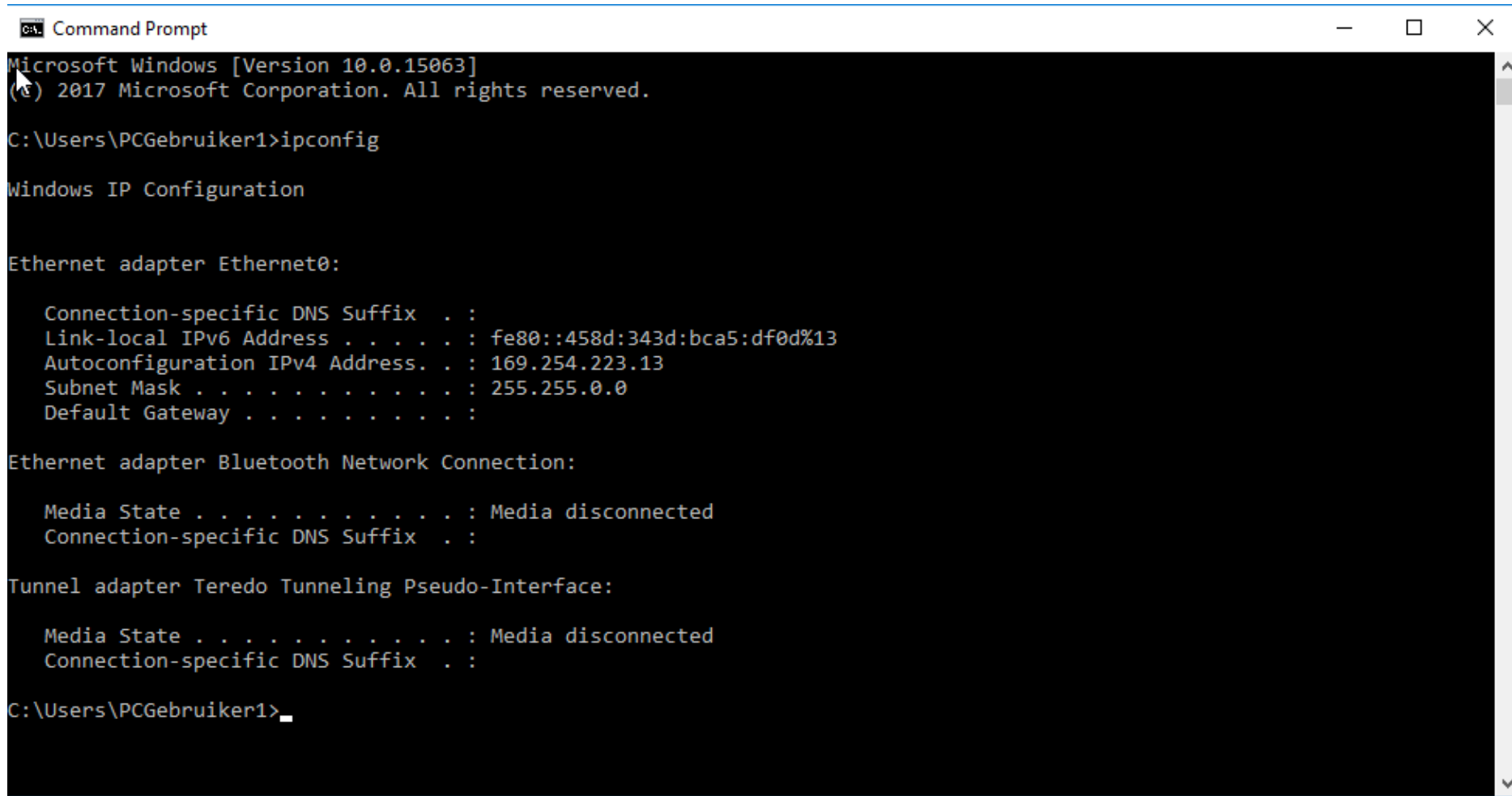
ADAPTER SETTINGS

Disable ...

Enable ...



IPCONFIG



```
Command Prompt
Microsoft Windows [Version 10.0.15063]
(c) 2017 Microsoft Corporation. All rights reserved.

C:\Users\PCGebruiker1>ipconfig

Windows IP Configuration

Ethernet adapter Ethernet0:

    Connection-specific DNS Suffix  . : 
    Link-local IPv6 Address . . . . . : fe80::458d:343d:bca5:df0d%13
    Autoconfiguration IPv4 Address. . : 169.254.223.13
    Subnet Mask . . . . . : 255.255.0.0
    Default Gateway . . . . . : 

Ethernet adapter Bluetooth Network Connection:

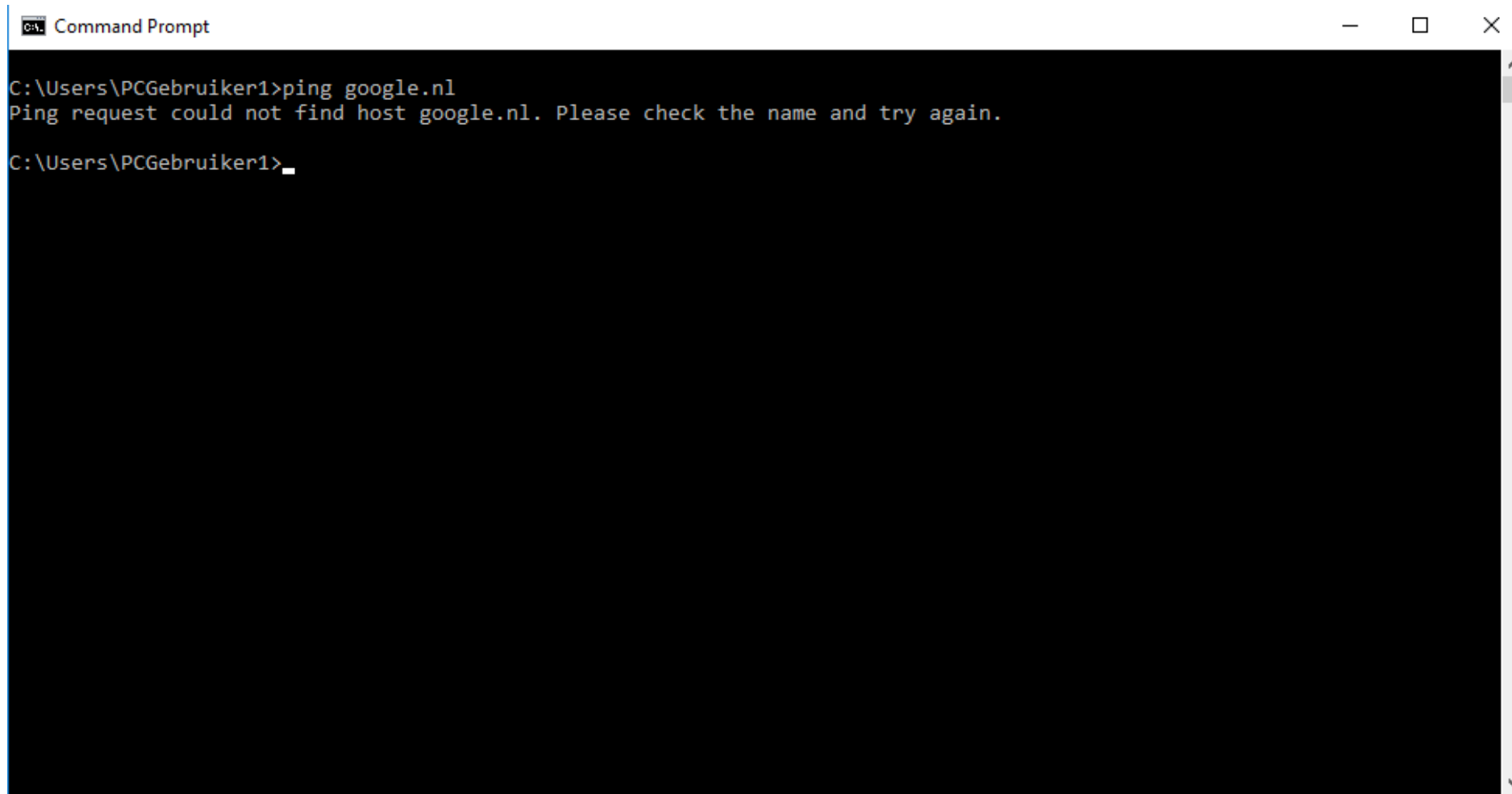
    Media State . . . . . : Media disconnected
    Connection-specific DNS Suffix  . : 

Tunnel adapter Teredo Tunneling Pseudo-Interface:

    Media State . . . . . : Media disconnected
    Connection-specific DNS Suffix  . : 

C:\Users\PCGebruiker1>
```

PING GOOGLE.NL



The image shows a screenshot of a Windows Command Prompt window. The window title is "Command Prompt". The command prompt shows the following text:

```
C:\Users\PCGebruiker1>ping google.nl  
Ping request could not find host google.nl. Please check the name and try again.  
C:\Users\PCGebruiker1>_
```

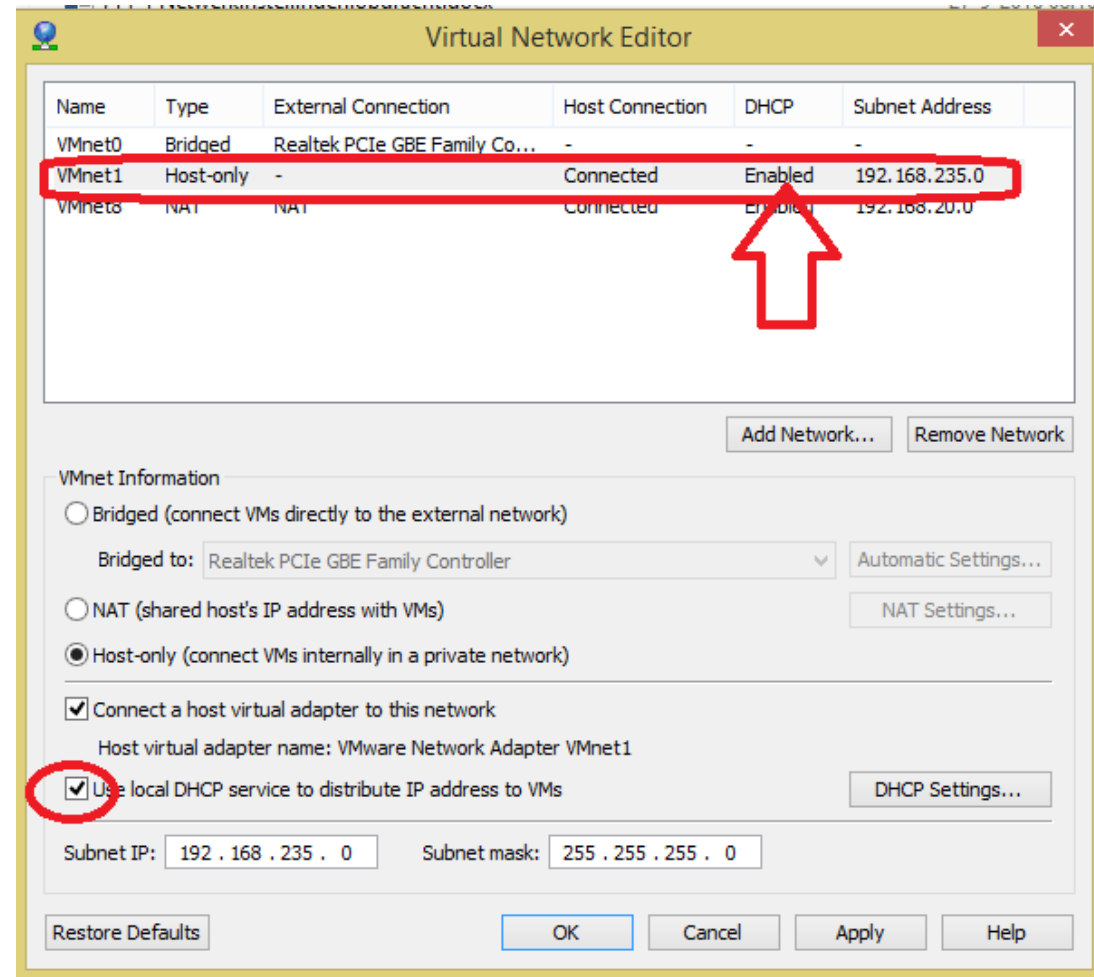
The window has a standard Windows title bar with minimize, maximize, and close buttons. A vertical scrollbar is visible on the right side of the command prompt area.

EDIT > VIRTUAL NETWORK EDITOR (VMWARE)

Select Host-only

Zet vinkje bij:

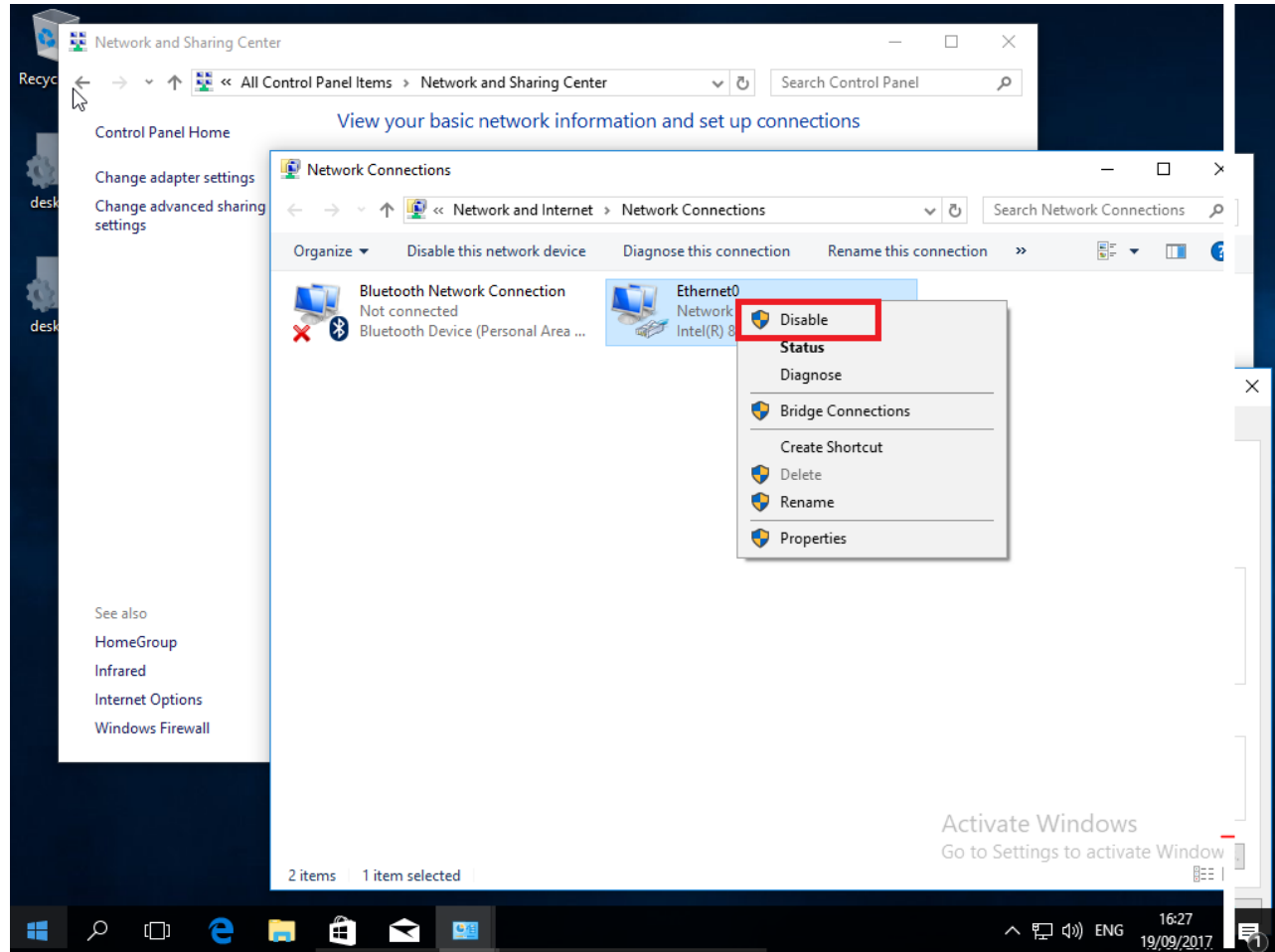
Use local DHCP service



ADAPTER SETTINGS

Disable ...

Enable ...



IPCONFIG

```
Command Prompt
C:\Users\PCGebruiker1>ipconfig

Windows IP Configuration

Ethernet adapter Ethernet0:

    Connection-specific DNS Suffix  . : localdomain
    Link-local IPv6 Address . . . . . : fe80::458d:343d:bca5:df0d%13
    IPv4 Address. . . . . : 192.168.235.128
    Subnet Mask . . . . . : 255.255.255.0
    Default Gateway . . . . . :

Ethernet adapter Bluetooth Network Connection:

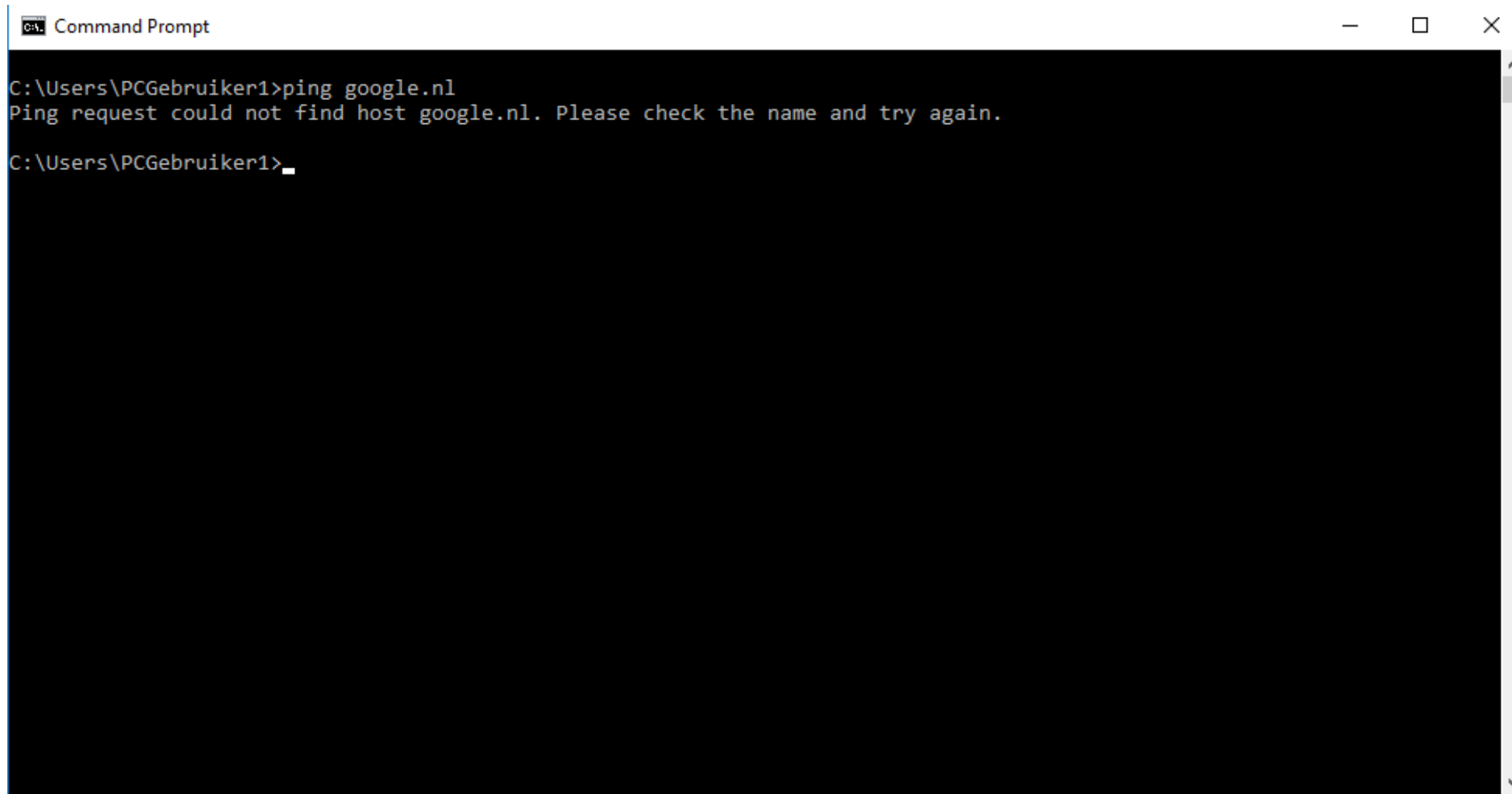
    Media State . . . . . : Media disconnected
    Connection-specific DNS Suffix  . :

Tunnel adapter Teredo Tunneling Pseudo-Interface:

    Media State . . . . . : Media disconnected
    Connection-specific DNS Suffix  . :

C:\Users\PCGebruiker1>
```

PING GOOGLE.NL



The image shows a screenshot of a Windows Command Prompt window. The title bar at the top reads "Command Prompt" and includes standard window control buttons (minimize, maximize, close). The command prompt shows the following text:

```
C:\Users\PCGebruiker1>ping google.nl  
Ping request could not find host google.nl. Please check the name and try again.  
C:\Users\PCGebruiker1>_
```

The text is displayed in a monospaced font on a black background. A vertical scrollbar is visible on the right side of the window.